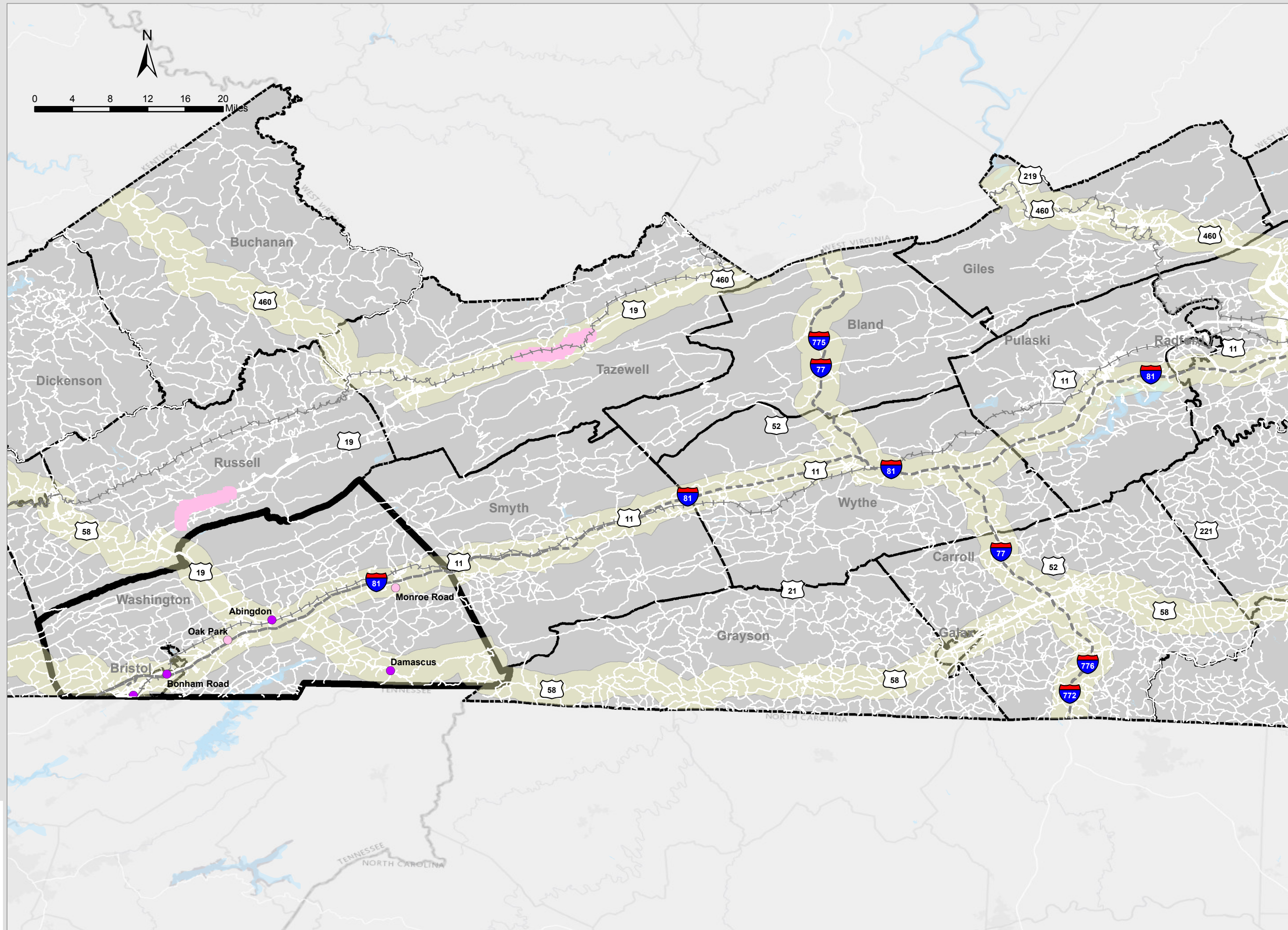
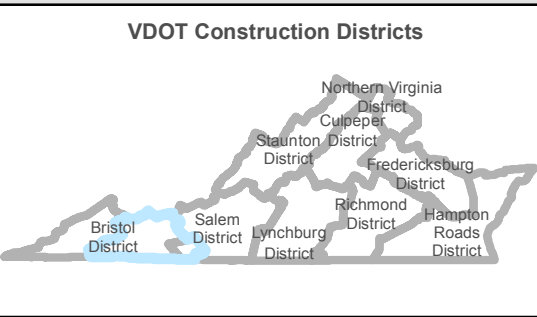


Regional Workshop - Bristol Area

July 31, 2019

Activity Centers

- Freight dependent
- Knowledge
- Local serving
- Ports
- Amtrak/Passenger Rail Stations
- Airports
- Interstates
- 0
- 1 - 10,000
- 10,000 - 25,000
- 25,000 - 50,000
- 50,000 - 75,000
- Greater than 75,000
- Other Selected Limited Access Facilities
- Rail Network
- Urban Development
- Buffer around Primary COSS Facilities
- Regional Network
- Counties and Cities
- Water



Office of
INTERMODAL
Planning and Investment

VTRANS | VIRGINIA'S
TRANSPORTATION PLAN

Date: 8/13/2019

This depiction of measures and data shown on this map are intended to be used as an aid in discussing Mid-term Needs. This depiction of measures and data do not represent Mid-Term Needs. They are one of several inputs used in the determination of Needs and are not the sole determinant.

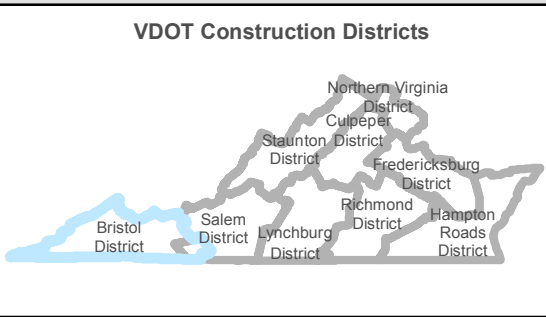
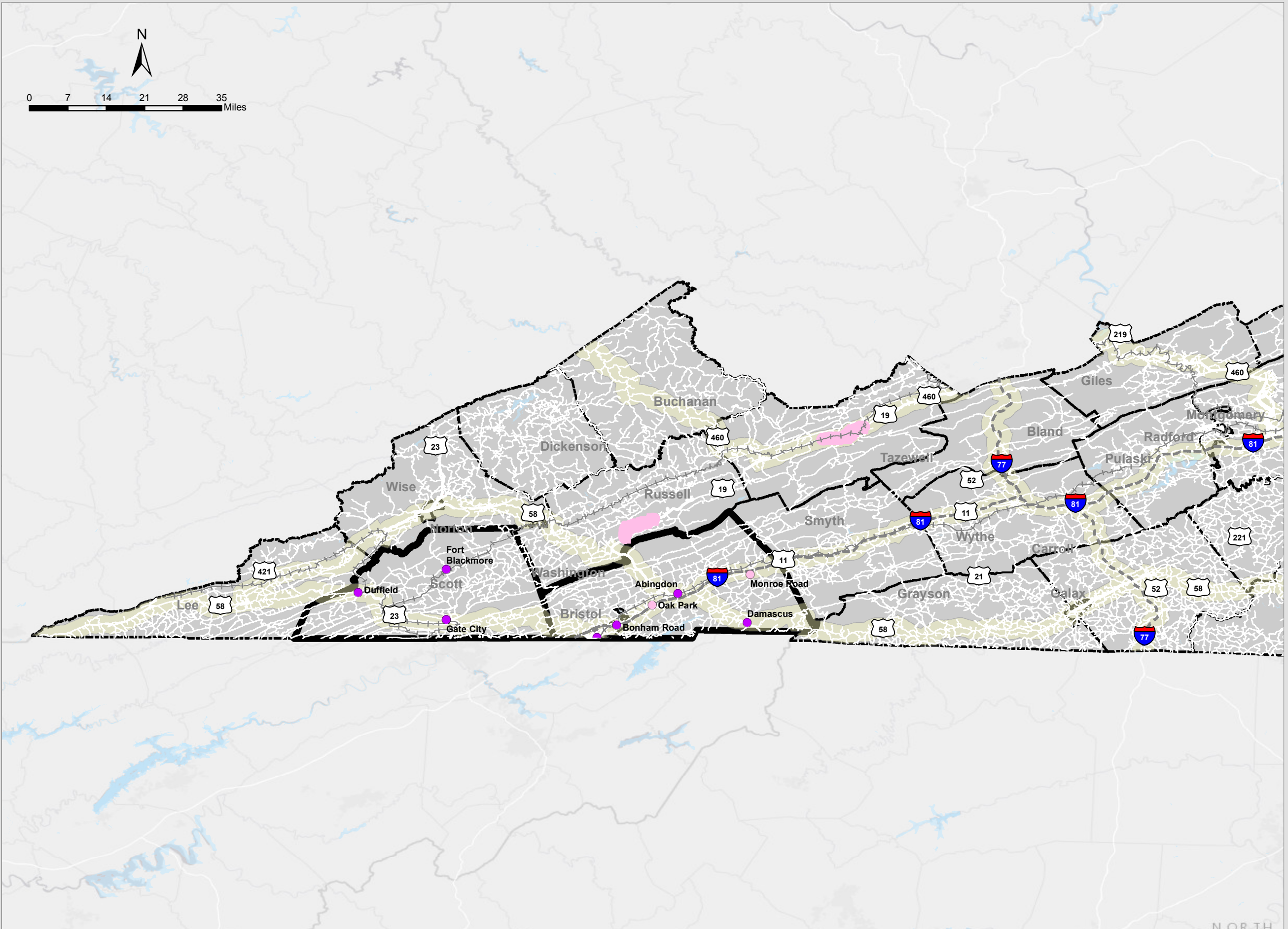
DRAFT

Regional Workshop - Bristol-Kingsport Area

July 31, 2019

Activity Centers

- Freight dependent
- Knowledge
- Local serving
- Ports
- Amtrak/Passenger Rail Stations
- Airports
- Interstates
- 0
- 1 - 10,000
- 10,000 - 25,000
- 25,000 - 50,000
- 50,000 - 75,000
- Greater than 75,000
- Other Selected Limited Access Facilities
- Rail Network
- Urban Development
- Buffer around Primary COSS Facilities
- Regional Network
- Counties and Cities
- Water



Date: 8/13/2019

This depiction of measures and data shown on this map are intended to be used as an aid in discussing Mid-term Needs. This depiction of measures and data do not represent Mid-Term Needs. They are one of several inputs used in the determination of Needs and are not the sole determinant.

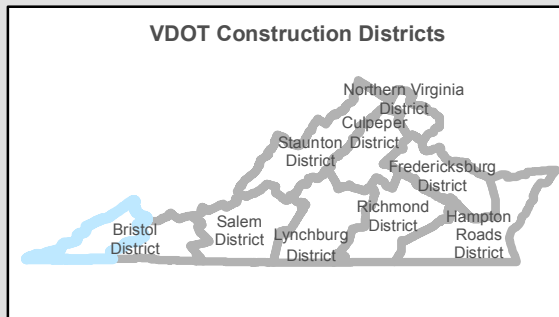
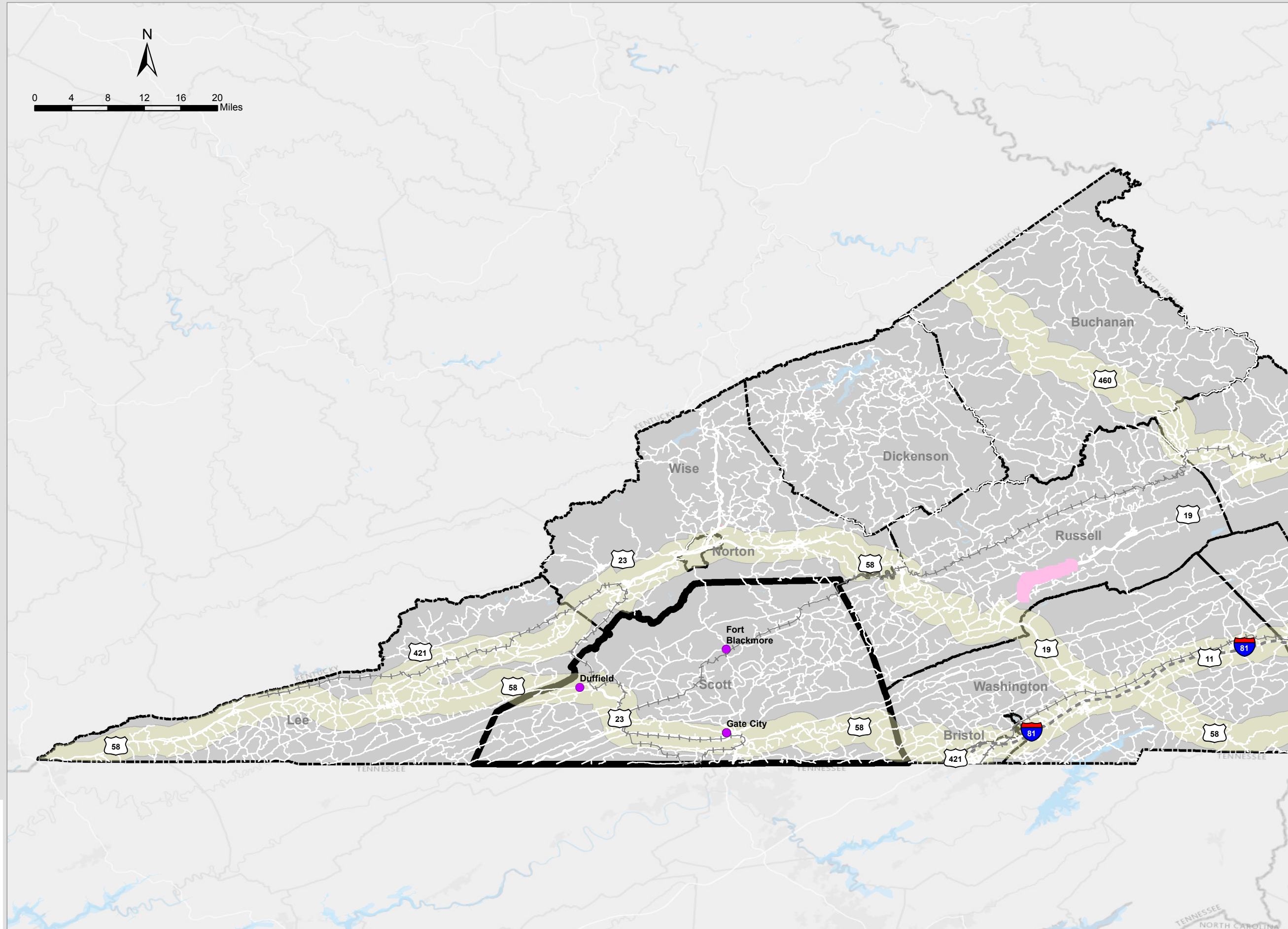
DRAFT

Regional Workshop - Kingsport Area

July 31, 2019

Activity Centers

- Freight dependent
- Knowledge
- Local serving
- Ports
- Amtrak/Passenger Rail Stations
- Airports
- - - Interstates
- 0
- 1 - 10,000
- 10,000 - 25,000
- 25,000 - 50,000
- 50,000 - 75,000
- Greater than 75,000
- Other Selected Limited Access Facilities
- +—+ Rail Network
- Urban Development
- Buffer around Primary COSS Facilities
- Regional Network
- Counties and Cities
- Water



Office of
INTERMODAL
Planning and Investment

VTRANS | VIRGINIA'S
TRANSPORTATION PLAN

Date: 8/13/2019

This depiction of measures and data shown on this map are intended to be used as an aid in discussing Mid-term Needs. This depiction of measures and data do not represent Mid-Term Needs. They are one of several inputs used in the determination of Needs and are not the sole determinant.

DRAFT